

American Sign Language 200

Signed Language Structure

University of Rochester
Spring 2026

Professor Info

- Norma Tourangeau
 - norma.tourangeau@rochester.edu
 - (585) 270-7011
- Class schedule: MW 12:30-1:45
- Office Hours: by appointment

Course Description

An examination of signed languages and the cognitive constraints that shape them, through a detailed consideration of the structure of American Sign Language and other natural signed languages of the world. Includes training in sign language notation and analysis. Satisfies the upper level writing requirement. (cross listed as BCS 264/564/LIN 230/430)

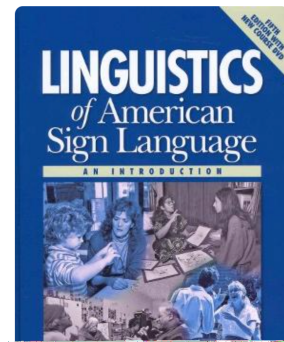
Prerequisite: ASL 106 with a B or better or permission of the instructor. (Spring)

Course Materials

Linguistics of American Sign Language, 5th Edition – Valli, C., C. Lucas, K. Mulrooney, M. Villanueva (2011). Washington, DC: Gallaudet University Press.

Laptop

Other readings posted on Blackboard



Blackboard



- Test 40%
 - 3 tests
 - Points vary by test
- Assignments 40%
 - 13 assignments
 - Points vary by assignment
- Mini Project 20%

Attendance

Class sessions will be interactive and will involve intensive class discussions of readings and hands-on activities. You are responsible for assigned reading materials in advance to coming to class. Be prepared to comment, ask questions and share your perspective in classroom discussions. You are allowed to have 3 excused absences for any reason. For each class missed after the third absence, 5% will be deducted from the final grade. Any combination of leaving early or arriving late (more than 15 minutes) five times counts as one absence.

Tests

A test will be given following each of three major linguistic subject areas to assist the instructor in gauging student understanding of information.

Mini Project

The course will focus on developing an understanding of what linguistics and linguistic research is by reading the course text and selected articles. Integrated throughout the course will be discussion of basic linguistic analysis and exploration into actual linguistic research culminating in a final project. *Guidelines with additional information/resources for this project are on BB.*

Cultural Note

In the Deaf Community, it is **imperative** that information is shared among members of the community to an extent that might seem in excess to members of the Hearing community. To begin the practice of information sharing, students who are to miss class or come late are **expected** to inform the instructor of it.



Assignments

Assignments from the textbook as well as instructor-developed assignments will be given to provide students with the opportunity to apply what has been learned through the readings and class discussion and to prepare students for their final projects.

Assignments are always due by 10am of the assigned due date.

Your assignments must be saved as a .doc or .docx file. Files with the extension .pages are not accessible for the instructor for giving feedback/comments or correcting answers on BB. You will receive a point deduction for the first time you submit a file with the wrong extension and receive a zero each time thereafter.

When you are asked to re-do assignments, please leave my comments/instructions on your homework and type your revised answers in a different color. Redoing an assignment is optional; you can re-do them if you wish to receive full credit.

Note 1: Late submissions will be accepted for up to one day:

- 1 point deduction for 5-point assignments
- 2 point deduction for 10-point assignments
- 3 point deduction for 15-point assignments

If more than 3 assignments are submitted late, you will automatically receive a zero.

Grading Procedure

93 -100 A	83-86 B	73-76 C	63-66 D
90-92 A-	80-82 B-	70-72 C-	60-62 D-
87-89 B+	77-79 C+	67-69 D+	67-69 E

Communication Policy

Since this is an advanced ASL course, our primary mode of communication will be signing. Class participants will use ASL communication while class is in session, and maintain a signing environment during class breaks, before class begins, and whenever there is an ASL instructor present. This class is an ASL forum in which you can gain access to discussions in new academic areas and deepen and broaden your ASL comprehension and expression. If a student or the instructor says something you do not understand, it is up to you to respectfully ask for clarification. To maximize your own enjoyment of the class and the learning experience, please feel free to ask questions. This is your class, and your questions will be helpful to your fellow class members as well.



Academic Honesty: The ASL Program courses abide by the University of Rochester's policy on academic honesty. Any suspected violations of academic honesty will be handled accordingly. Students are allowed to work together on specific assignments; however the work must reflect each student's unique perspective.

Adaptations: The Americans with Disabilities Act mandates the elimination of discrimination against persons with disabilities. If you need course adaptations or accommodations because of a disability, please contact the University Disability Resources for Students with Disabilities at Wallis Hall, Room 24, 275 -5550. Please see me if you need adaptations or if you have problems with course material.

Conduct: Cell phones and pagers cannot be used during class and must be turned off. Video recordings of the instructor or the class cannot be made without the explicit prior written permission of the instructor.

